

13 TRANSPORT

Highway and Layout Design

The proposed new site vehicular access takes the form of a priority junction with Bramford Road and has been designed to ensure all vehicle movements can be accommodated safely, including the manoeuvres of refuse vehicles.

A 5.5m metre access drive width with 6 metre corner radii is proposed to ensure the site access can accommodate all expected vehicle movements including those made by larger service and emergency vehicles.

The access has been located in order to maximise visibility and safety. Visibility from the junction (as shown in the extract for the preliminary design), is provided in line with the standards appropriate for the speeds recorded along Bramford Road adopting criteria set out in applicable design guidance.

Traffic Generation and Impact

Analysis of the UK's national system of trip generation analysis indicates that the proposed 114 homes have the potential to generate up to 80 vehicle movements in the AM Peak hour period and 71 vehicular movements in the PM peak hour period.

This predicted level of traffic generation is equivalent to less than 1.5 vehicular movements per minute in both peak hours and will have a negligible impact on local traffic conditions once trips have distributed east/west from the access point.

Extensive assessment of the local highway network will be undertaken to ensure that the development impact is identified and mitigated. This assessment is progressing in liaison with Suffolk Highways officers.

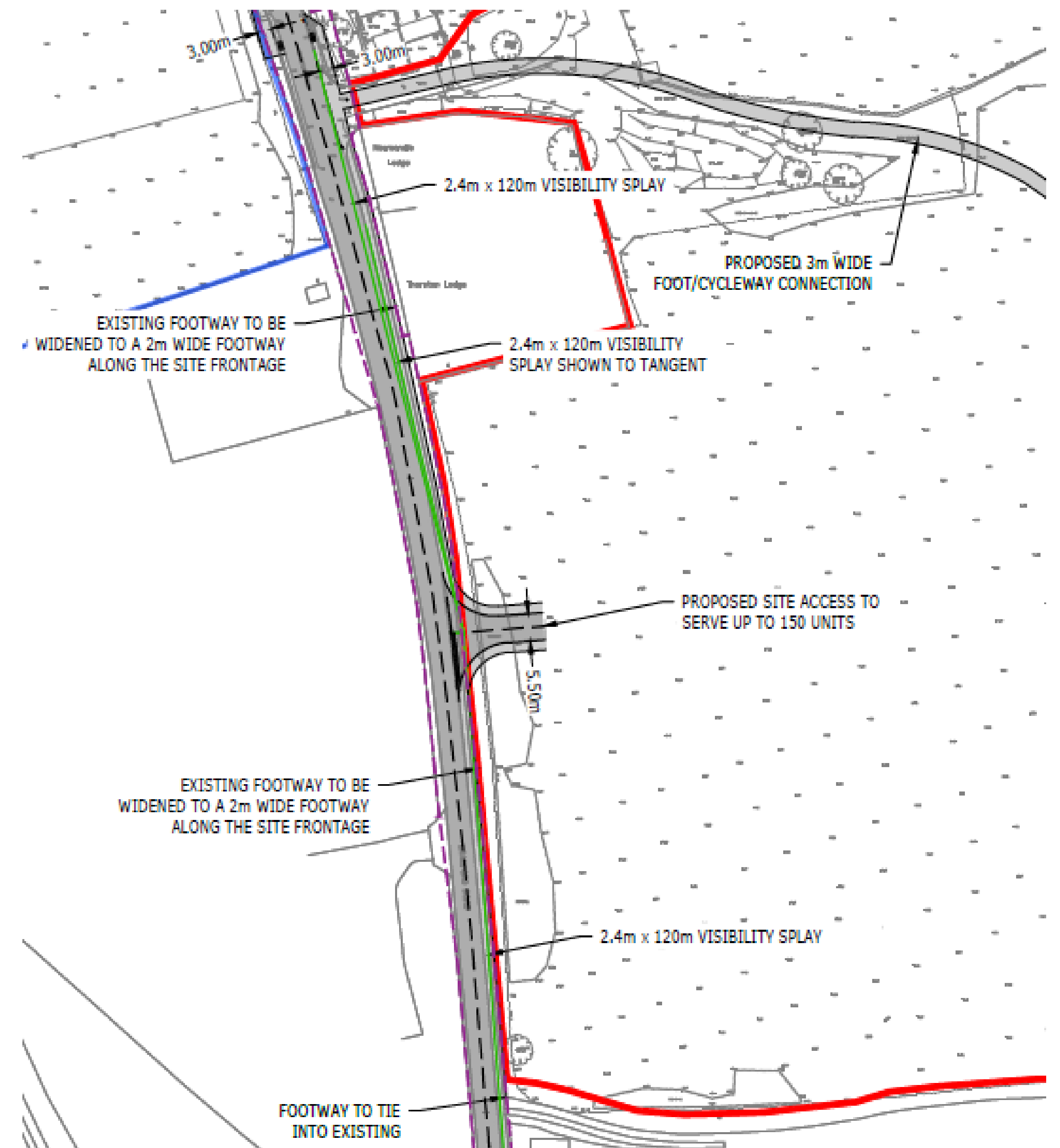


Figure 8: Proposed New Access

14 TRANSPORT

Sustainability of the site

Bus stops in Bramford are located approximately 800 metres from the site and are served by the 8B, 988, 111 and 111a. These services provide access to Ipswich and Sroughton and offer connections to key employment destinations such as the Amazon fulfilment centre at the Eastern Gateway and local facilities including Morrison's at Sroughton Road.

The high frequency 8 Service can also be accessed from the Adair Road stop to the southeast of the site. The 8 provides convenient access to Ipswich Town Centre.

Ipswich Rail Station is situated within cycling distance at 4.5km to the southeast of the site.

Footways are provided within the vicinity of the site providing a connection to facilities and key destinations within western Ipswich as well as to the centre of Bramford, including Bramford Primary school.



Pedestrians and Cyclists

Car and cycle parking will be provided in accordance with the Suffolk Guidance for Parking Technical Guidance document, with resident and visitor parking contained entirely on site to ensure overspill parking does not occur.

A new dedicated pedestrian and cycle link is also proposed to enhance pedestrian and cycle permeability, providing a traffic-free connection routing through the site away from a large stretch of Bramford Road.

This new facility will provide a direct connection suitable for commuter use that will link up with new and existing pedestrian/cycle links extending towards the centre of Ipswich.

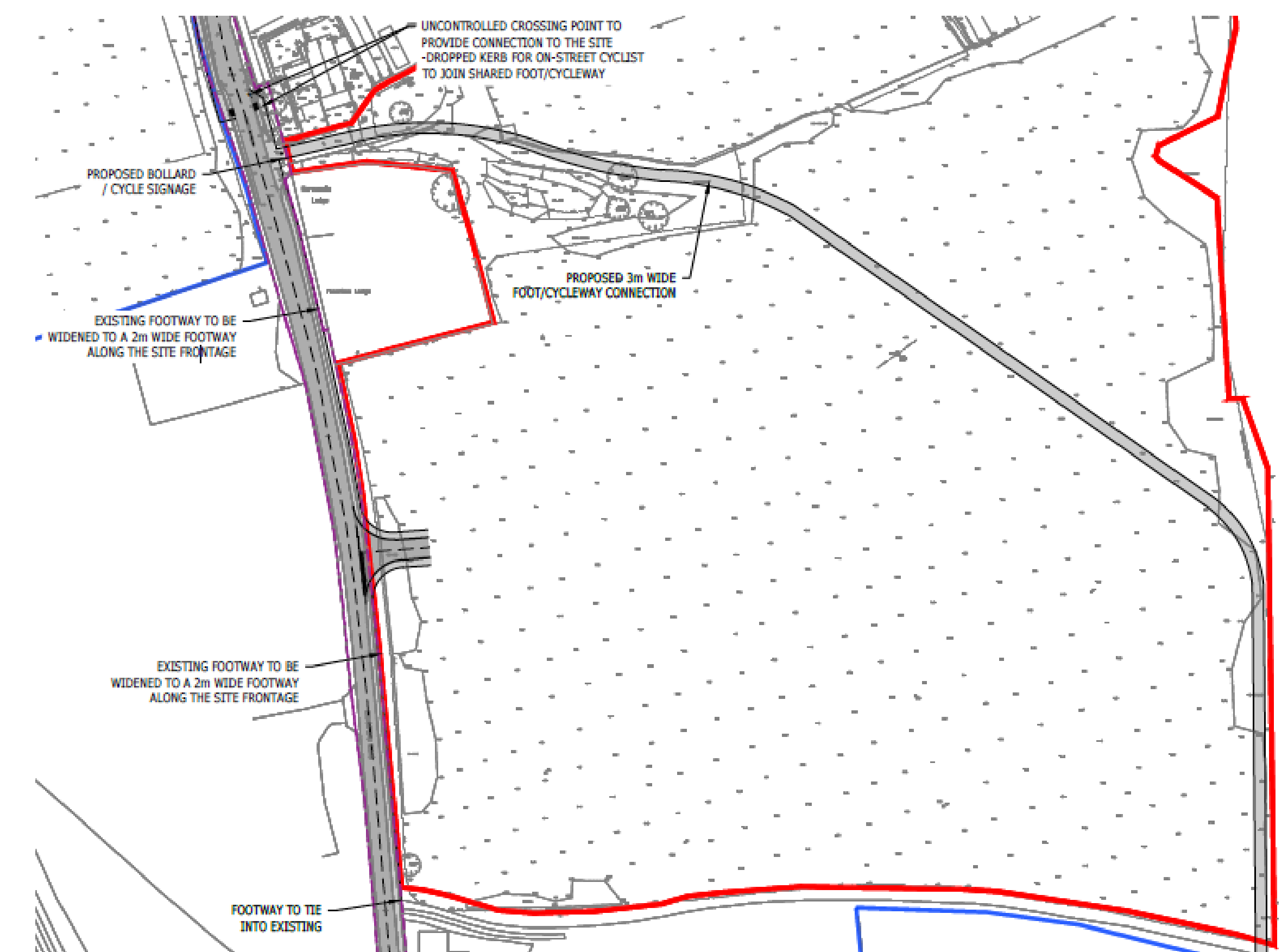


Figure 9: Proposed foot-cycleway connections